



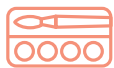
## SimpliShade™

*Simplified Universal Composite System*

### Simplify your workflow with just three shades.

SimpliShade, powered by Adaptive Response Technology, covers all 16 VITA® classical shades with just 3 shades. Simplify your inventory management and save yourself time on shade selection while having the confidence in premium handling qualities and highly esthetic restorations. Keep your patients confidently smiling while keeping your workflow simple with SimpliShade.

## Features & Benefits



### Simplify Shade-matching

Shade selection made easier and faster. SimpliShade matches all 16 VITA classical shades with just 3 shades: Light, Medium, Dark.



### Adaptive Response Technology (ART)

The ART filler network, a proven technology found in Harmonize®, helps you achieve lifelike restorations with exceptional strength and unmatched esthetics.



### Streamline Inventory Management

Save time and money with minimal shades to meet almost all your composite needs. Declutter your shelves, avoid the burden of re-ordering too many different part numbers, and reduce or eliminate expired products.



### Universal For All Cavity Classes

Use SimpliShade with confidence in all cavity classes without the need for a blocker, unlike OMNICHROMA®¹

## Simplification Without Compromise

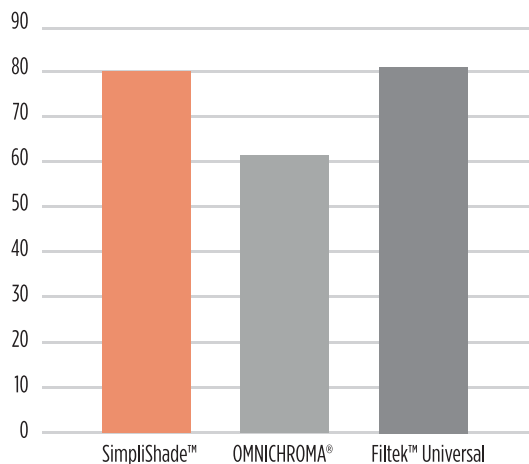
Simplify your workflow and inventory management without compromising the things that matter the most when it comes to your restorations.

## Restorations That Shine

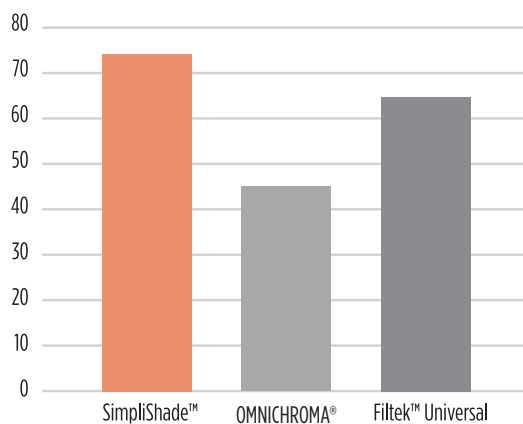
SimpliShade's smaller particle size of 50nm allows for better polishability and ability to maintain luster and gloss over time.²

### Polishability Chart (GU)

Progloss, 10 seconds



### Gloss After Toothbrush Wear (GU)

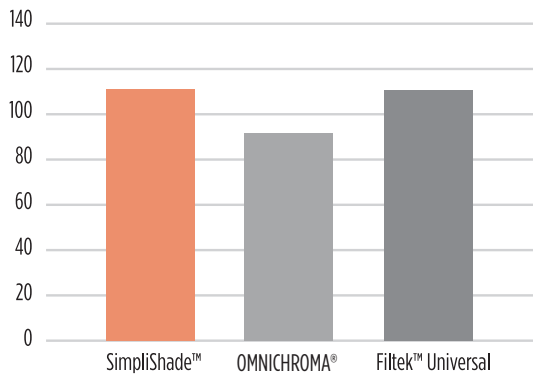


Kerr Internal Data. Available upon request.

## Longer-lasting Restorations

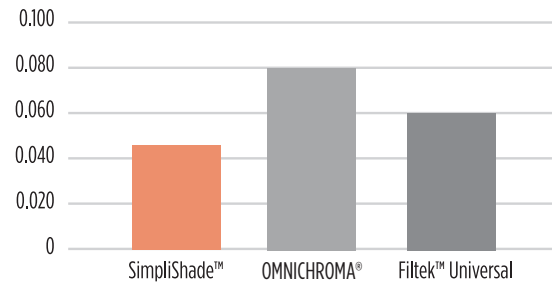
ART system allows for high loading of 81% for excellent strength, better resistance to chipping and fracture overtime.

### Flexural Strength (MPa)



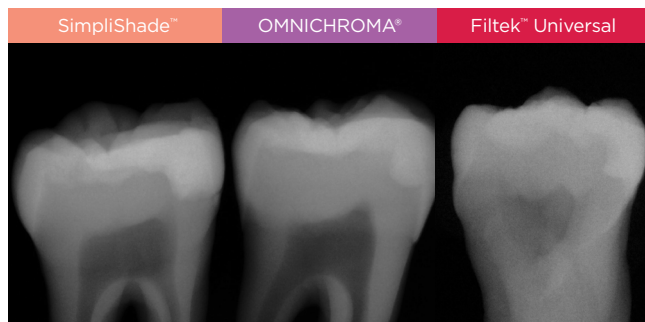
University of Alabama at Birmingham

### Volumetric Wear (mm<sup>3</sup>)



## Excellent Radiopacity

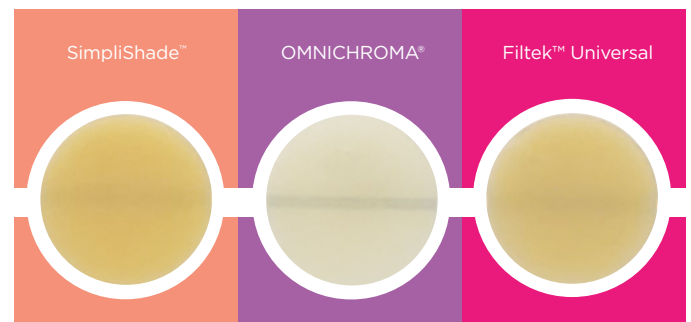
The more radiopaque, the easier it is to distinguish the restoration from the tooth structure under a radiograph. SimpliShade at 300% AI is almost twice as radiopaque as OMNICHROMA.<sup>1</sup>



Radiograph taken from a human tooth with a Class II restoration.<sup>2</sup>

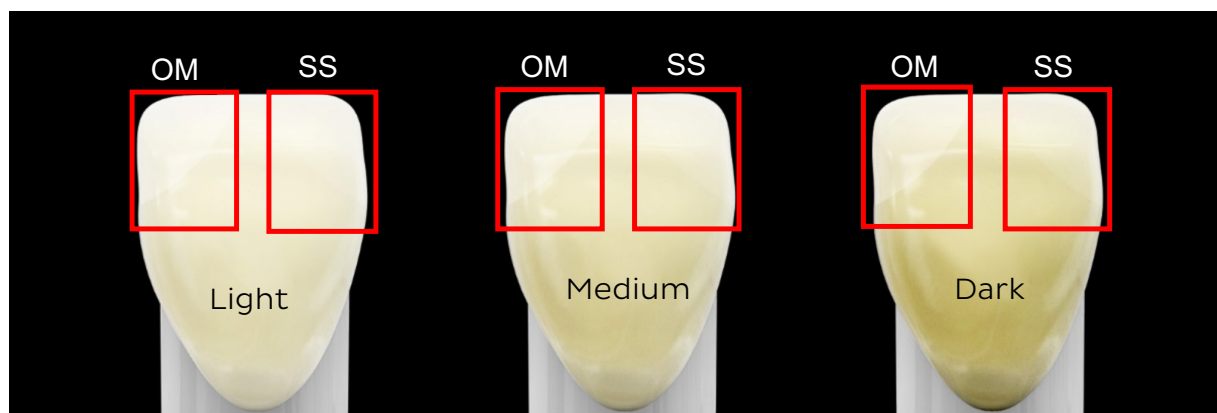
## Optimal Translucency

SimpliShade provides ideal opacity to mimic tooth structure, to better mask underlying tooth stains, and blend well with surrounding dentition, resulting in a more lifelike restoration.<sup>2</sup>



## Better Blending

SimpliShade has an enhanced chameleon effect for better blending compared to OMNICHROMA used with a blocker.<sup>2</sup>

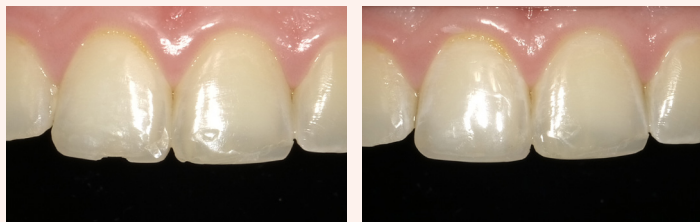


OM - OMNICHROMA® with Blocker SS - SimpliShade™

## SimpliShade Before & After

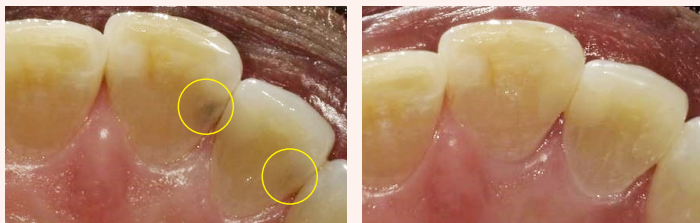
## VITA Shade Guide Equivalent

LIGHT



**A1, B1, B2, C1, D2**

MEDIUM



**A2, A3, C2, D3, D4**

DARK



**A3.5, A4, B3, B4, C3, C4**

Case images courtesy of Dr. Matthew Miller

## Ordering Information

- 36971** Syringe, Light
- 36972** Syringe, Medium
- 36973** Syringe, Dark
- 36974** Syringe, Bleach White
- 36975** Syringe, Universal Opaque

- 36976** Unidose 20 Pack, Light
- 36977** Unidose 20 Pack, Medium
- 36978** Unidose 10 Pack, Dark
- 36979** Unidose 10 Pack, Bleach White
- 36980** Unidose 10 Pack, Universal Opaque

Visit [Go.Kerrdental.com/Simplishade](https://Go.Kerrdental.com/Simplishade) for more information.

### References:

1. University of Alabama at Birmingham
2. Kerr Internal Data. Available upon request.

SimpliShade is a trademark of Kerr Corporation. All other trademarks are properties of their respective owners. The study by the University of Alabama at Birmingham was a blind study and sponsored by Kerr.