

Intraoral camera

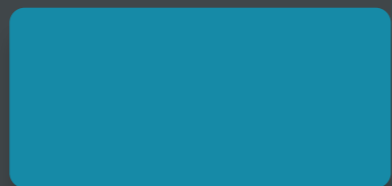
YOUR VIEW. WHERE OTHERS CAN ONLY IMAGINE

Enhancing your workflows
through innovation

C50



Remarkable clinical vision



FULL HD

Clear and detailed images

- A more confident final diagnostic
- Increased case acceptance

VISION MODE

Transcript of natural colors

- Straight forward patient education
- Great for comparing teeth stain and sharing it with patient

AUTO FOCUS

Gain of time & better image clarity

- Easy to use
- Improved patient comfort

MACRO VISION

More visibility of fissures & caries

- Easier clinical evaluation
- Enhanced communication between clinician and patient

DEPTH OF FIELD

5 camera shots* available in ONE camera

- User-friendly product for an improved procedure
- Quick switch: from one position to another in a second



*The 5 camera shots include macro, portrait, smile, tooth and intraoral

All you need to see at your fingertips

Unprecedented vision with Daylight mode

- Improved interpretation of tooth shades with rendering of natural colors.
- A powerful support for controlling pathologies, post-treatment and facilitate the follow up process.



Exclusive macrovision performance

- Extreme visibility for ultra-precise diagnosis.



But also...

- Crystal clear vision with greater depth of field.
- A single camera for all shots: macro, intraoral, tooth, smile and portrait.



Improved patient follow-up

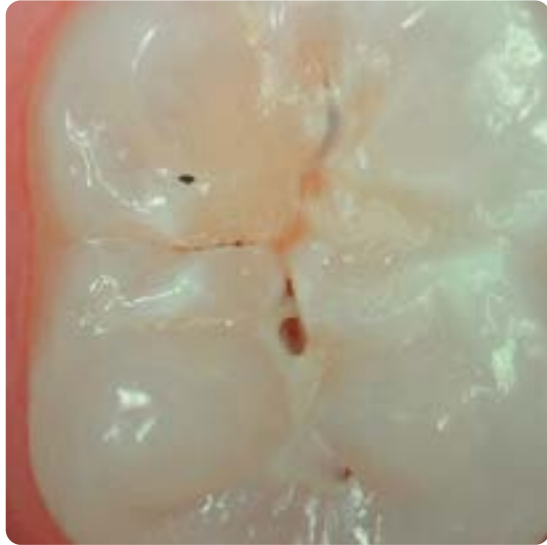
- More information about your patients: age, illnesses, diet, oral hygiene, etc.
- Lasting trust between you and your patients.



Remarkable clinical versatility

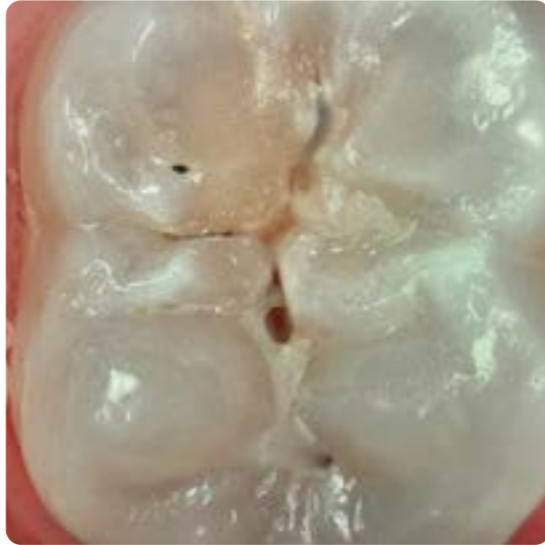
Vision modes for a detailed and more reliable diagnosis

DAYLIGHT MODE



Record of **natural colors** for a better interpretation of tooth shade, pathology identification and patient follow-up.

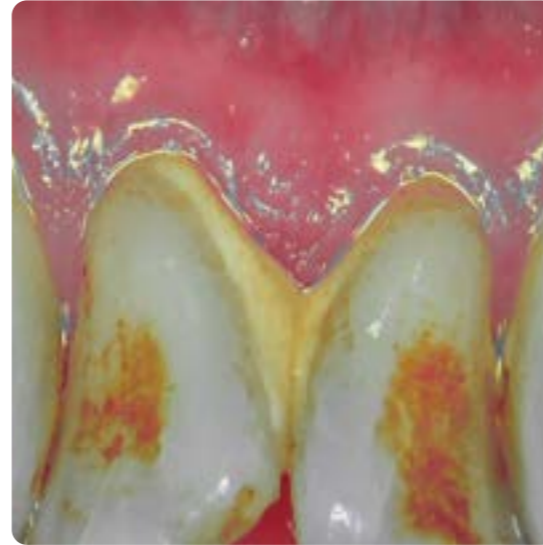
DAYLIGHT+ MODE



High contrasts emphasizing anatomic fissures and details of the dentin structure/depth.

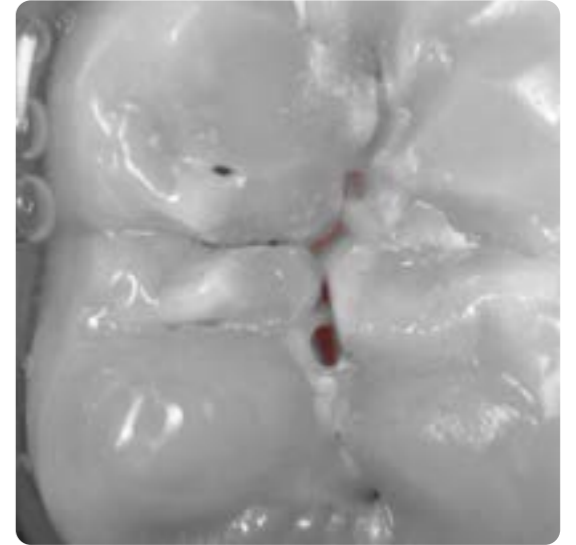
A versatile system to access a large panel of cases

PERIO MODE



Enhancement of **dental plaque and gingival inflammation** thanks to chromatic amplification.

CARIO MODE



Caries detection by **fluorescence** technique by LEDs.

Camera modes for complete patient follow-up



Daily dentistry follow-up

Daylight or Diagnostic-Aid option helps you visualize anatomical details that are invisible to the naked eye or with a mirror. These modes allow the dentist to show the difference between «before» and «after» care.

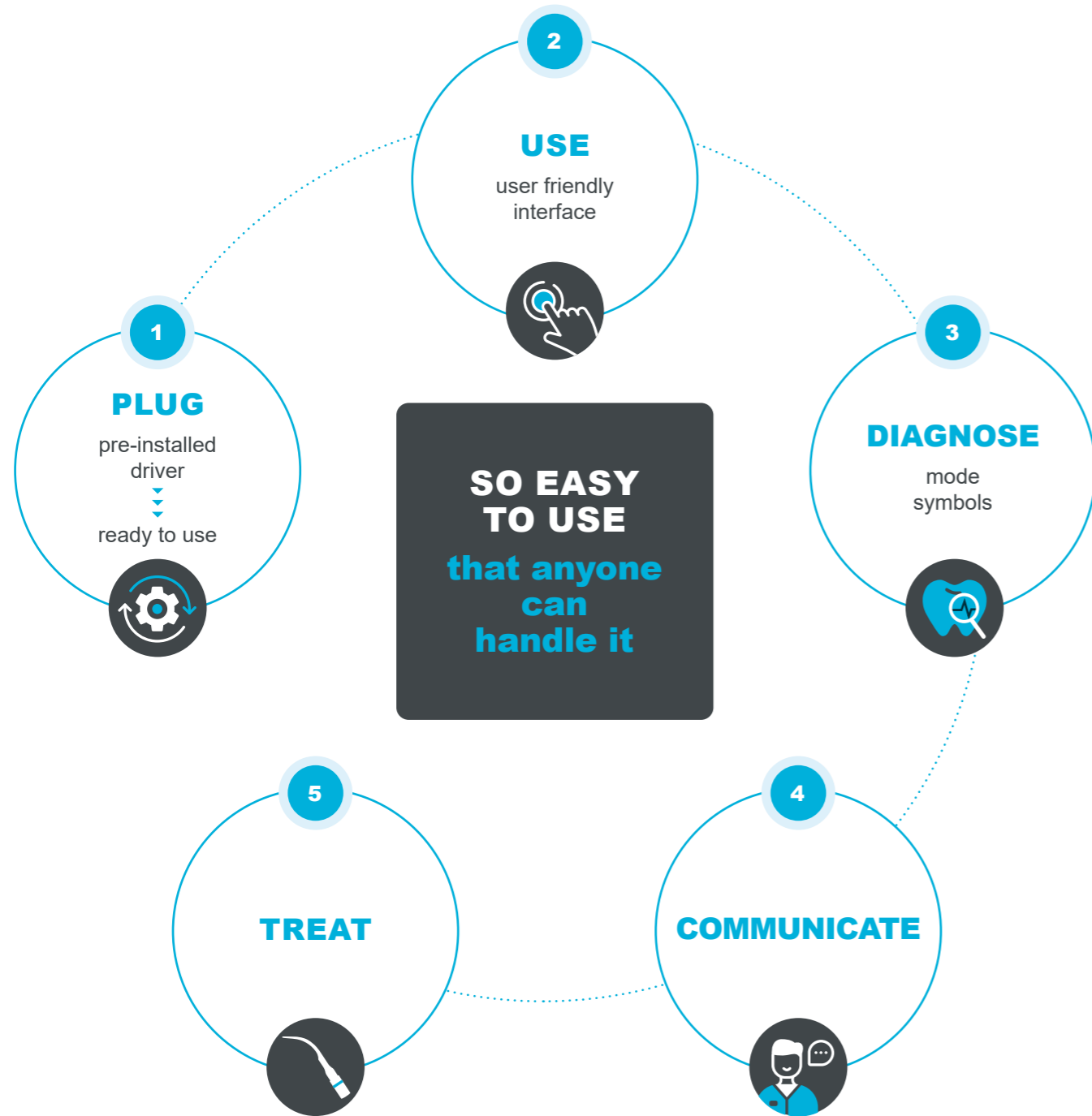


Orthodontics follow-up

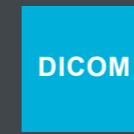
The portrait position turns off the LED light to capture the patient's facial or lateral side, ensuring the best orthodontics follow-up.



Remarkable operational freedom



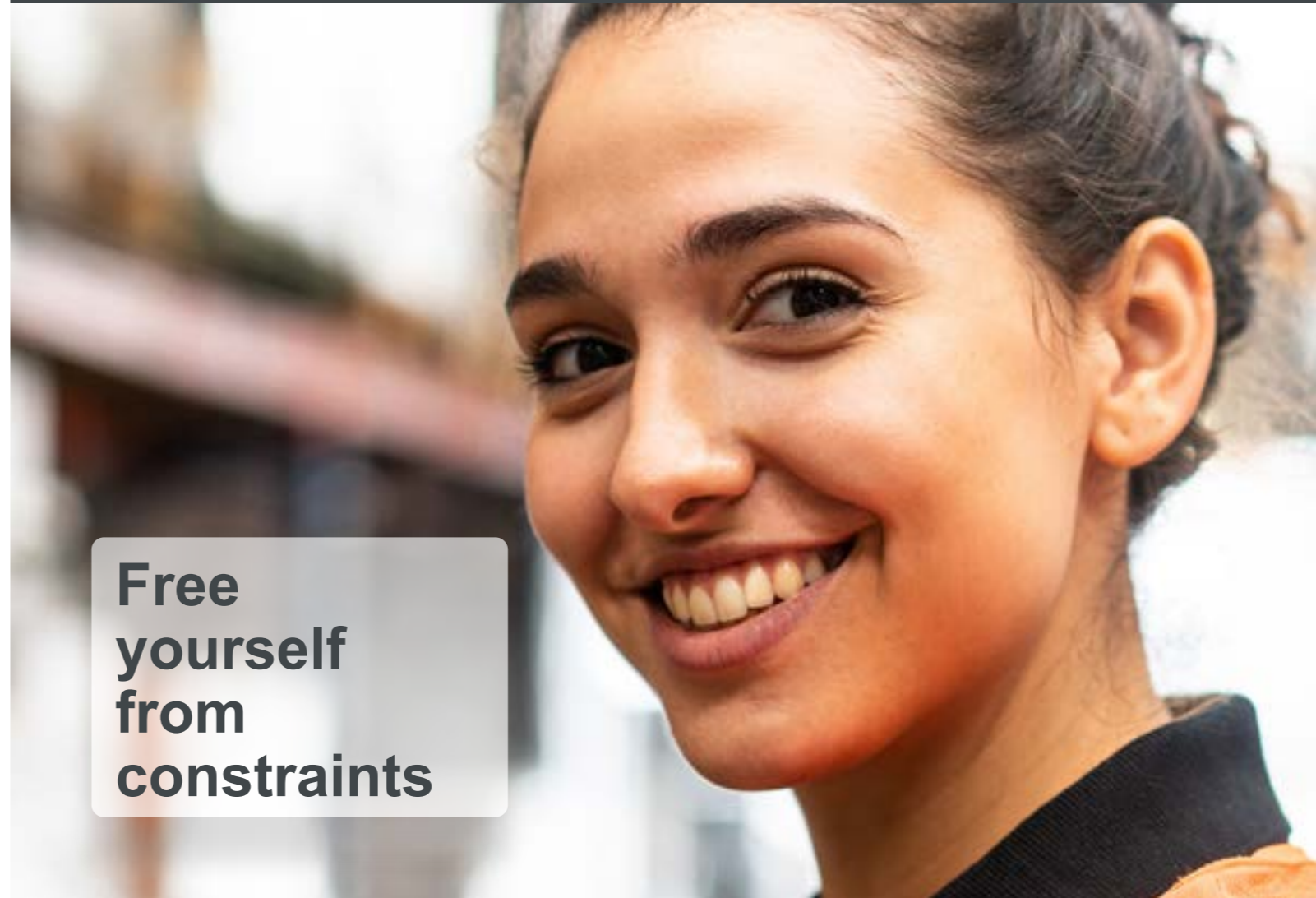
Fully compatible



Open to anyone

Easily integrated into any software, do not waste any more time installing support tools.

Free yourself from constraints



Beyond the details

Patients become more involved as they quickly understand the importance of the suggested treatment.

**Increase
treatment
acceptance**

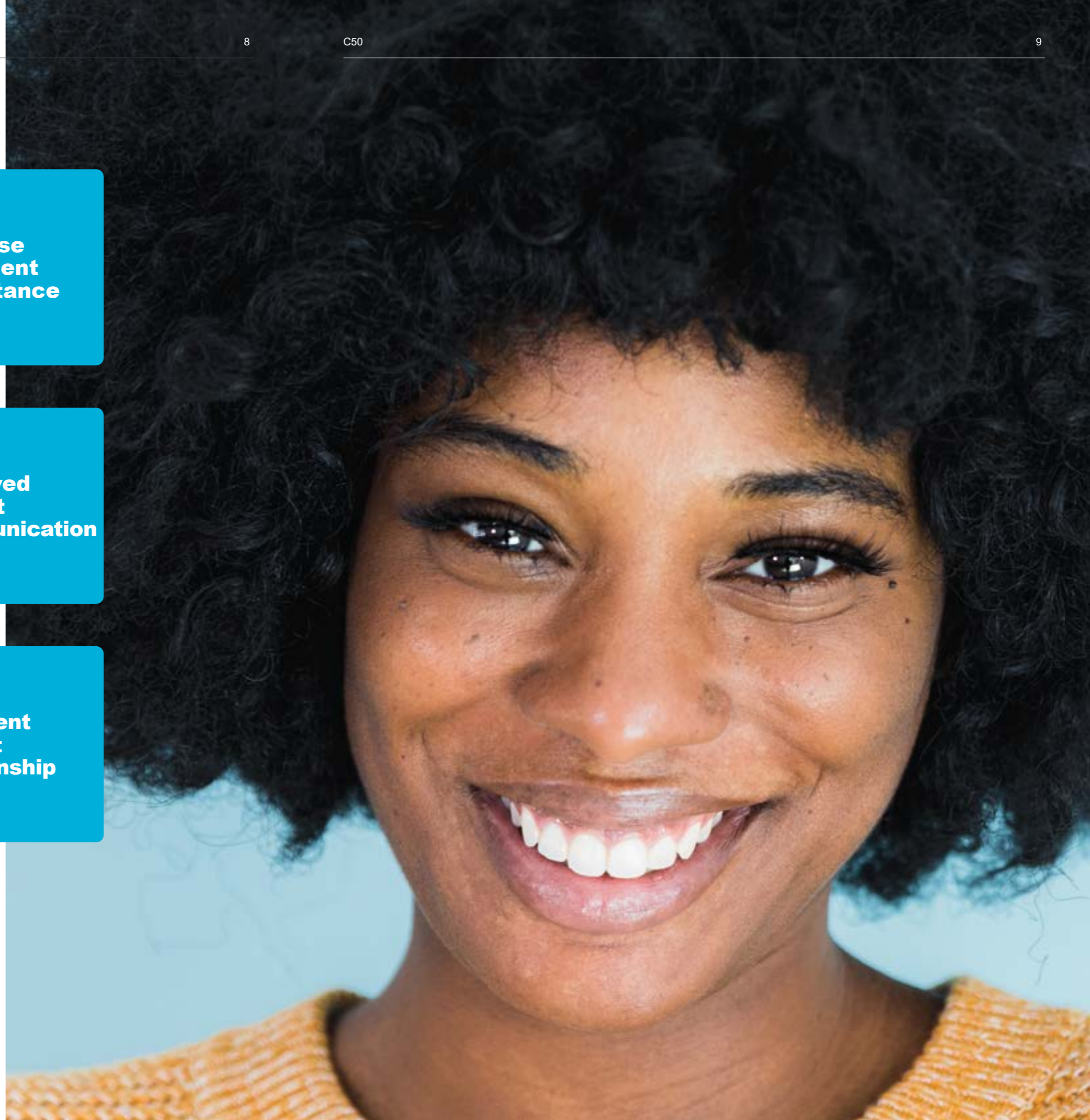
Highlight pathologies and explain clinical procedures easily. Facilitate dialogue to address objections and patient concerns.

**Improved
patient
communication**

Provide effective treatment planning by saving the images directly in the patient record. Easily compare images from previous patient visits and monitor progress.

**Confident
patient
relationship**

**Empowering you
to focus on what
matters the most:
your patients**





About Caries Detection workflow

With ACTEON®'s caries detection product portfolio, you can implement an efficient caries detection and treatment workflow. It also helps you communicate more successfully with your patients and increase confidence.



Detect & diagnose

I see a large number of patients every day, so my practice requires that me and my team stays on top of its productivity.



C50

C50 intraoral camera is the perfect companion for non-invasive and reliable caries detection, thanks to its fluorescent technology



Treat

I need to make my treatment as efficient and minimally invasive as possible for my patients.



newtron

With its controlled linear vibrations and frequency adjustment, Newtron® P5XS B.LED allows precise treatments and preserves tissues. It makes the treatment more comfortable for both the patient and yourself.



Follow-up

I need to be able to do the proper follow-up on my procedures while minimizing the radiation exposure for my patients.



x-mind unity

sopix plug-in

I can provide the most complete follow-up at the lowest dose to my patients thanks to my X-Mind® unity with Sopix Plug-in and the ACE technology



Protect

I need to ensure optimal clinical protection for my patients and limit the risk of cross-contamination.



riskontrol

Riskontrol® disposable tips are your must-have solution to perform dental care in a safe and clean place. It assures protection, comfort and safety in every daily clinical procedures.



Camera specifications

Sensor	CMOS
Resolution	1920 x 1080px
Sensitivity	2 lux
Frame per second (FPS)	25 – 30
Aspect ratio	16/9
Lighting	6 white LEDs and 2 blue LEDs
Focus adjustment	Automatic focus or Single focus
4 Visions mode	DAYLIGHT mode If option enabled: DAYLIGHT+ mode, PERIO mode and CARIO mode
Depth of field	From portrait to macro
Image capture	Capture button or footswitch (optional)
Angle of view	75°
Cable length	3m
USB output	3.0
Consumption	4.5W max
Handpiece dimensions	L: 200; W: 30; H: 24mm
Handpiece weight	100g
International Protection Marking (IP)	Dust & waterproofness protection IP53

Computer Configuration Requirements

Computer requirements	Specs
CPU	Intel Core i5 4 core 2GHz Gen 8 or greater and Apple M1 or greater
RAM	8GB
USB version	3.0 or greater
USB chipset	Intel or Renesas
Operating system	from Windows 10 PRO 64 bits or macOS Catalina

Class I medical device for dental care. CE. For professional dental use only.
This medical device is not refunded by health insurance organizations. Read carefully the instructions before use.
Manufacturer: Sopro® ACTEON® Group (France)
Date of modification: March 2023





SOPRO

A company of ACTEON® Group

**ZAC Athélia IV,
avenue des Genévriers,
13705 LA CIOTAT, France**

**Tel. +33 (0) 442 980 101
Fax. +33 (0) 442 717 690**

info@acteongroup.com

Follow-us

