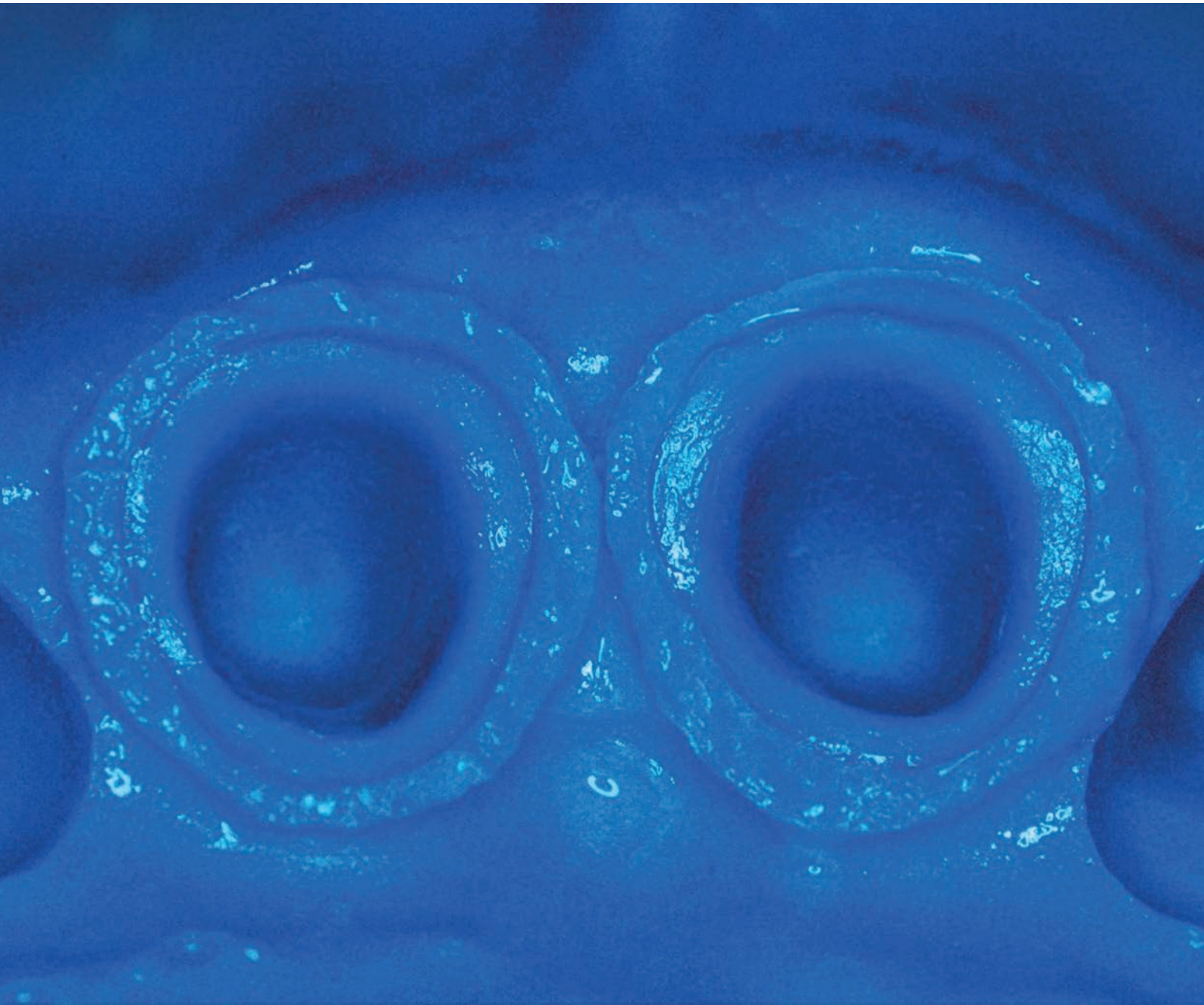


# **elite HD+**

**HYDROPHILIC**



**Clinical**

*A-Silicone Impression material*

**Zhermack**   
Dental

# elite HD+

When hydrophilia  
becomes definition.

ZHERMACK presents ELITE HD+.

The impression material that combines the modern effects of **nano-technology** and **hydrophilia** in order to guarantee the highest levels of performance in different clinical conditions.



## + HYDROPHILIC

› **Immediate hydrophilic** behaviour after just 2 seconds

## + FLOWABILITY

› **Nanoparticles in the fillers** improve flowability in the gingival sulcus

## + DETAILED

› **The synergistic action** between immediate hydrophilia and nano-technology ensures a consistent reproduction of almost any kind of detail

## + VERSATILITY

› **A complete range** of viscosities and setting times suitable for different impression technique

## + PRACTICAL

› The new 5:1 system for automatic mixing machines fits straight into the machine. It does not need a cartridge sleeve

## + COMPLETE

› **A range of products** that satisfies all demands

# elite HD+

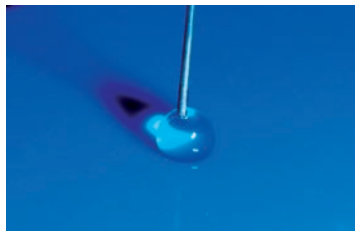
Hydrophilia and  
a synergistic

## THE EFFECTS OF HYDROPHILIA

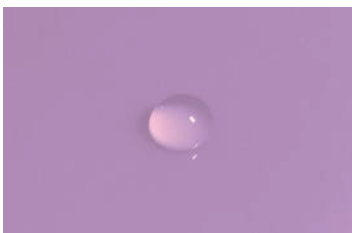
### IMMEDIATE HYDROPHILIA

After just 2 seconds **Elite HD+** becomes extremely absorbent within the gingival sulcus.

#### DROP TEST



#### CONVENTIONAL A-SILICONE

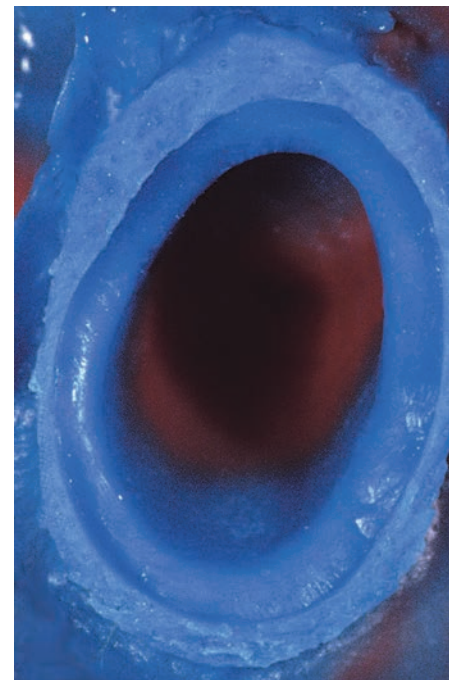


A drop after 2 seconds

#### ELITE HD+



A drop after 2 seconds



**elite HD+ light** normal

## PERFECT DEFINITION

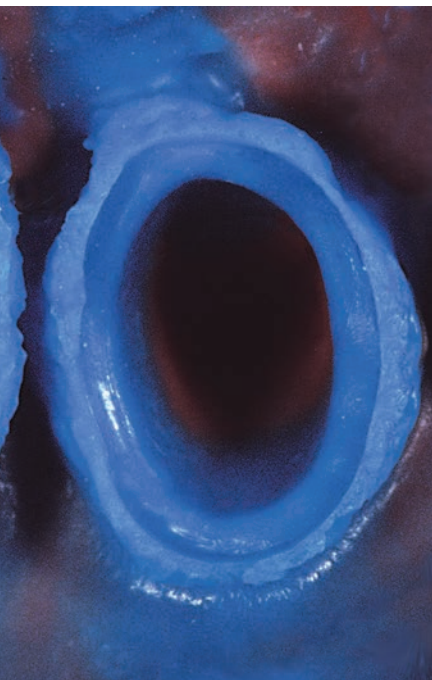
**Immediate hydrophilia** allows instant identification of detail, therefore drastically reducing the risk of bubble formation.

nano-technology,  
stic choice.

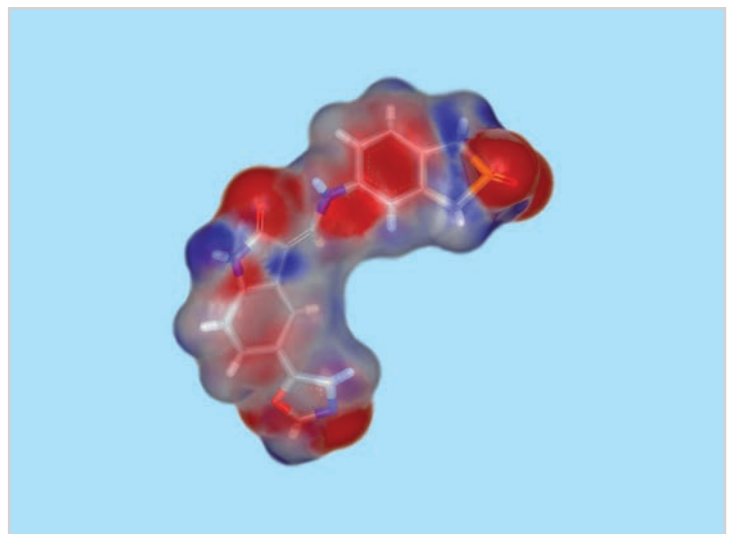
## THE EFFECTS OF NANO-TECHNOLOGY

### IDEAL FLOWABILITY

The application of **nano-particles**, allows **ELITE HD+** to reach an ideal level of flowability within the gingival sulcus.



setting - impression detail



Magnified of the silicone wash

### FLOW PRESSURE

Another beneficial **effect of nano-technology** within **Elite HD+** drastically increase the flowability of the silicone in order to reach less accesible areas.

# elite HD+

## Impression techniques.

VISCOSITY IN TRAY	SUGGESTED TECHNIQUES	RECOMMENDED COMBINATIONS
ELITE HD+ Putty Soft Fast ELITE HD+ Maxi Putty Soft Fast	Two-Stages	ELITE HD+ Light Body Fast ELITE HD+ Super Light Body Fast
ELITE HD+ Putty Soft Fast ELITE HD+ Maxi Putty Soft Fast	Single-Stage	ELITE HD+ Light Body Fast
ELITE HD+ Putty Soft Normal ELITE HD+ Maxi Putty Soft Normal	Single-Stage	ELITE HD+ Light Body Normal ELITE HD+ Regular Body Normal
ELITE HD+ Tray Material Heavy Body ELITE HD+ Maxi Tray Material Heavy Body	Single-Stage	ELITE HD+ Light Body Fast ELITE HD+ Light Body Normal ELITE HD+ Regular Body Normal
ELITE HD+ Monophase Medium Body ELITE HD+ Maxi Monophase Medium Body	Monophase	

## Packaging

C203050 ELITE HD+ SUPER LIGHT BODY FAST SETTING	2 x 50 ml cartridges (Base+Catalyst) + 12 small/yellow mixing tips
C203040 ELITE HD+ LIGHT BODY FAST SETTING	2 x 50 ml cartridges (Base+Catalyst) + 12 small/yellow mixing tips
C203030 ELITE HD+ LIGHT BODY NORMAL SETTING	2 x 50 ml cartridges (Base+Catalyst) + 12 small/yellow mixing tips
C203035 ELITE HD+ LIGHT BODY NORMAL SETTING	1 tube of 90 ml Base + 1 tube of 90 ml Catalyst
C203020 ELITE HD+ REGULAR BODY NORMAL SETTING	2 x 50 ml cartridges (Base+Catalyst) + 12 small/yellow mixing tips
C203025 ELITE HD+ REGULAR BODY NORMAL SETTING	1 tube of 90 ml Base + 1 tube of 90 ml Catalyst
C202032 ELITE HD+ TRAY MATERIAL (Heavy Body)	2 x 50 ml cartridges (Base+Catalyst) + 6 medium/green mixing tips
C202320 ELITE HD+ MAXI TRAY MATERIAL (Heavy Body)	2 x 380 ml cartridges (Base+Catalyst) + 15 dynamic-static mixing tip + 2 mixing tip locker
C202330 ELITE HD+ MAXI TRAY MATERIAL (Heavy Body) ECO	6 x 380 ml cartridges (Base+Catalyst) + 2 mixing tip locker
C202020 ELITE HD+ MONOPHASE (Medium Body)	2 x 50 ml cartridges (Base+Catalyst) + 12 small/yellow mixing tips
C202300 ELITE HD+ MAXI MONOPHASE (Medium Body)	2 x 380 ml cartridges + 15 dynamic-static mixing tips + 2 mixing tip lockers + 1 elastomer syringe + 15 intraoral tips
C202310 ELITE HD+ MAXI MONOPHASE (Medium Body) ECO	6 x 380 ml cartridges + 2 mixing tip lockers + 3 elastomer syringes + 45 intraoral tips
C203000 ELITE HD+ PUTTY NORMAL SETTING	2 x 250 ml tubs (Base+Catalyst)
C203002 ELITE HD+ PUTTY NORMAL SETTING ECO	4 x 450 ml tubs (Base+Catalyst)
C203010 ELITE HD+ PUTTY FAST SETTING	2 x 250 ml tubs (Base+Catalyst)
C203012 ELITE HD+ PUTTY FAST SETTING ECO	4 x 450 ml tubs (Base+Catalyst)
C202340 ELITE HD+ MAXI PUTTY NORMAL SETTING	2 x 380 ml cartridges (Base+Catalyst) + 15 dynamic-static mixing tip + 2 mixing tip locker
C202350 ELITE HD+ MAXI PUTTY NORMAL SETTING ECO	6 x 380 ml cartridges (Base+Catalyst) + 2 mixing tip locker
C202360 ELITE HD+ MAXI PUTTY FAST SETTING	2 x 380 ml cartridges (Base + Catalyst) + 2 mixing tip lockers + 15 dynamic-static mixing tips
C202370 ELITE HD+ MAXI PUTTY FAST SETTING ECO	6 x 380 ml cartridges (Base + Catalyst) + 2 mixing tip lockers

**elite HD+**  
**does not fear water.**

# elite HD+

## HYDROPHILIC



### Adhesives

C700025 UNIVERSAL TRAY ADHESIVE Adhesive for standard metal trays: 10 ml bottle

### Accessories

C202070	Mixing tips small/yellow (x48)
C202090	Yellow oral tips (x48)
C202080	Mixing tips medium/green (x48)
C202100	D2 Dispenser - 1:1
C205530	Dynamic-static mixing tip (x50)
C205540	Mixing tip locker (x2)
C207200	Spatula for silicones (x1)
C207202	Mixing pad (x1), Sheets (x12)
HI-TRAY	A wide range of steel and plastic impression trays is available

### Kits

C203100	INTRO KIT NORMAL SETTING Putty Normal 2x 250 ml (Base + Cat) + 1x50 ml Light Normal + 1x50 ml Regular Normal + 1 Dispenser D2 + 12 small/yellow mixing tips + 6 yellow oral tips
---------	--

### Equipment

C309030	Modulmix automatic mixer (230 V)
C309031	Modulmix automatic mixer (230 V) UK version
C309035	Modulmix automatic mixer (115 V)

### Accessories equipment

XR0240555	Lateral flaps colour grey
XR0240520	Wall mounting kit for 1 Modulmix
XR0240530	Wall mounting kit for 2 Modulmix
XR0240500	Workstation support for 1 Modulmix
XR0240505	2-machine countertop support
XR0240631	Charger (230 V)
XR0240616	Charger (115 V)

### BRANCHES

#### GERMANY

Zhermack GmbH Deutschland  
Öhlmühle 10 - D-94448 Marl

T +49 (0) 54 43 / 20 33 - 0  
F +49 (0) 54 43 / 20 33 - 11  
info@zhermack.de  
www.zhermack.de

#### POLAND

Zhermapol Sp. z o.o.  
ul. Augustówka 14  
02 - 981 Warszawa - Polska

T +48 22 858 82 72  
+48 22 292 71 17  
F +48 22 642 07 14  
biuro@zhermack.com  
www.zhermapol.pl

#### USA

Zhermack Inc.  
P.O. Box 4195, River Edge  
New Jersey 07661 - 4195

T +1 (877) 819 6206  
+1 (732) 389 8540  
F +1 (732) 389 8543  
info@zhermackusa.com  
www.zhermackusa.com

Zhermack S.p.A. | Via Bovazecchino, 100 | 45021 Badia Polesine (RO) ITALY  
T +39 0425 597611 | F +39 0425 53596 | info@zhermack.com | www.zhermack.com

**Zhermack**